

BUPA AGED CARE - WARNERS BAY



LANDSCAPE - COVER SHEET	L-0000
LANDSCAPE - ILLUSTRATIVE MASTERPLAN	L-1000
LANDSCAPE - GROUND AND ENTRY	L-1100
LANDSCAPE - CENTRAL COURTYARD	L-1101
LANDSCAPE - EXTERNAL COURTYARDS	L-1102
LANDSCAPE - INDICATIVE PLANT SCHEDULE SHEET 1	L-2001
LANDSCAPE - INDICATIVE PLANT SCHEDULE SHEET 2	L-2002

Amendments		
Issue	Description	Date
A	ISSUE FOR DRAFT DA	15/01/2016
B	ISSUE FOR DA	28/01/2016
C	ISSUE FOR REVISED DA	27/06/2016

Client	
BUPA Care Client Details Level 2, 420 King Street Newcastle, NSW, 2300	
Consultant	
Jackson Teece	APP Corporation
Consultant	
Rider Levett Bucknall	De Witt Consulting
Consultant	
Seca Solution	MPC Consulting Engineers

Architect	
<div><div>GROUP GSA</div><div>Group GSA Pty Ltd ABN 76 002 113 779 Level 7, 80 William St East Sydney NSW Australia 2011 www.groupgsa.com T +612 9361 4144 F +612 9332 3458</div></div> <div>architecture interior design urban design landscape nom architect M. Sheldon 3990</div>	
Consultant	
Wood & Grieve Engineers	Northrop

Project Title		
WARNERS BAY BUPA AGED CARE		
Drawing Title		
LANDSCAPE COVER SHEET		
Drawing Created (date)	07/01/16	
Drawing Created (by)	SS	
Verified	JH	
Approved	JH	
Scale	NTS	
Project No.	Drawing No.	Issue
15659	0000	C
This drawing is the copyright of Group GSA Pty Ltd and may not be altered, reproduced or transmitted in any form or by any means in part or in whole without the written permission of Group GSA Pty Ltd. All levels and dimensions are to be checked and verified on site prior to the commencement of any work, making of shop drawings or fabrication of components. Do not scale drawings. Use figured Dimensions.		



Amendments		Date
Issue	Description	
A	ISSUE FOR DRAFT DA	15/01/2016
B	ISSUE FOR DA	28/01/2016
C	ISSUE FOR REVISED DA	27/01/2016

Client
BUPA Care
Client Details
Level 2, 420 King Street
Newcastle, NSW, 2300
Consultant
Jackson Teece

Consultant
Rider Levett Bucknall

Consultant
Seca Solution

Consultant
APP Corporation

Consultant
De Witt Consulting

Consultant
MPC Consulting Engineers

Architect

GROUP GSA

Group GSA Pty Ltd. ABN 76 002 113 779
Level 7, 80 William St East Sydney NSW
Australia 2011 www.groupgsa.com
T +612 9361 4144 F +612 9332 3458

architecture interior design urban design landscape
nom architect M. Sheldon 3990

Consultant
Wood & Grieve Engineers

Consultant
Northrop

Project Title

**WARNERS BAY
BUPA AGED CARE**

Drawing Title

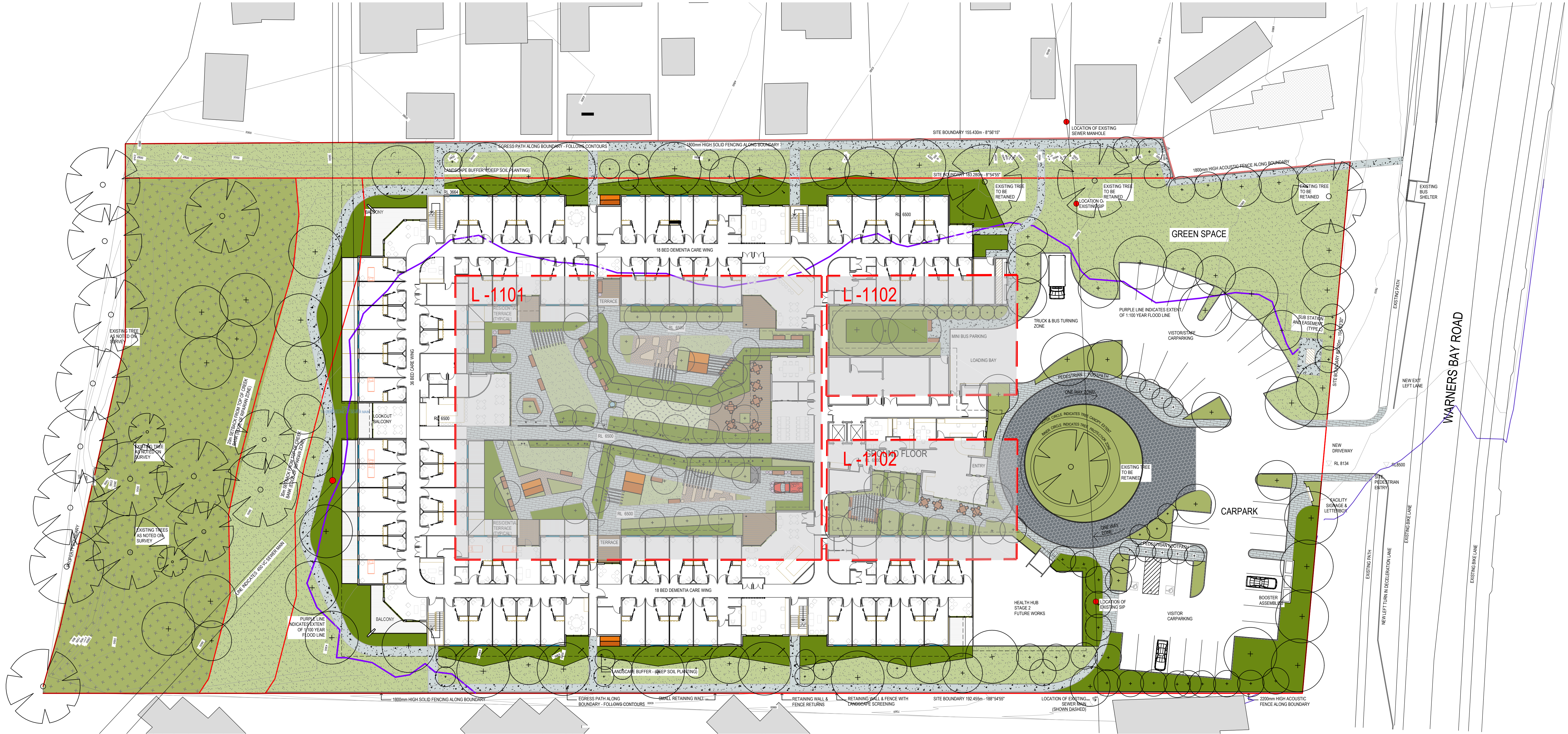
**LANDSCAPE
ILLUSTRATIVE MASTERPLAN**

Drawing Created (date) 07/01/16
Drawing Created (by) SS
Verified JH
Approved JH
Scale 1:100 A1



Project No. 15659
Drawing No. 1000
Issue C

This drawing is the copyright of Group GSA Pty Ltd and may not be altered, reproduced or transmitted in any form or by any means in part or in whole without the written permission of Group GSA Pty Ltd. All levels and dimensions are to be checked and verified on site prior to the commencement of any work, making of shop drawings or fabrication of components. Do not scale drawings. Use figured Dimensions.



KEY

	EXISTING TREES TO BE RETAINED		SENSORY PLANTING		ARTIFICIAL TURF		TRAFFICABLE PAVERS		SHELTER/PERGOLA
	NEW TREE PLANTING		VEGETABLE GARDEN		CONCRETE UNIT PAVERS		CONCRETE		
	SCREEN PLANTING		TURF		BRICK PAVERS		TIMBER SEAT		
	BED PLANTING		RIPARIAN SETBACK REFER VMP		TIMBER DECKING		1800 mm FENCE		

Issue	Description	Date
A	ISSUE FOR INFORMATION	13/01/2016
B	ISSUE FOR DRAFT DA	15/01/2016
C	ISSUE FOR DA	28/01/2016
D	ISSUE FOR REVISED DA	27/06/2016

Client
BUPA Care
Client Details
Level 2, 420 King Street
Newcastle, NSW, 2300
Consultant
Jackson Teece

Consultant
Rider Levett Bucknall

Consultant
Seca Solution

Consultant
APP Corporation

Consultant
De Witt Consulting

Consultant
MPC Consulting Engineers

Architect

GROUP GSA
Group GSA Pty Ltd ABN 76 002 113 779
Level 7, 80 William St East Sydney NSW
Australia 2011 www.groupgsa.com
T +612 9361 4144 F +612 9332 3458
architecture interior design urban design landscape
nom architect M. Sheldon 3990

Project Title

**WARNERS BAY
BUPA AGED CARE**
Drawing Title
**LANDSCAPE MASTERPLAN
GROUND AND ENTRY**

Drawing Created (date) 07/01/16
Drawing Created (by) SS
Verified JH
Approved JH
Scale 1:300 @A1

Project No. 15659
Drawing No. 1100
Issue D

This drawing is the copyright of Group GSA Pty Ltd and may not be altered, reproduced or transmitted in any form or by any means in part or in whole without the written permission of Group GSA Pty Ltd. All levels and dimensions are to be checked and verified on site prior to the commencement of any work, making of shop drawings or fabrication of components. Do not scale drawings. Use figured Dimensions.



KEY

	EXISTING TREES TO BE RETAINED		SENSORY PLANTING		ARTIFICIAL TURF		TRAFFICABLE PAVERS		SHELTER/PERGOLA
	NEW TREE PLANTING		VEGETABLE GARDEN		CONCRETE UNIT PAVERS		CONCRETE		
	SCREEN PLANTING		TURF		BRICK PAVERS		TIMBER SEAT		
	BED PLANTING		RIPARIAN SETBACK REFER VMP		TIMBER DECKING		1800 mm FENCE		

Amendments	Issue	Description	Date
A	ISSUE FOR INFORMATION		13/01/2016
B	ISSUE FOR DRAFT DA		15/01/2016
C	ISSUE FOR DA		28/01/2016

Client
BUPA Care
Client Details
Level 2, 420 King Street
Newcastle, NSW, 2300
Consultant
Jackson Teece

Consultant
Rider Levett Bucknall

Consultant
Seca Solution

Consultant
APP Corporation

Consultant
De Witt Consulting

Consultant
MPC Consulting Engineers

Architect

GROUP GSA
Group GSA Pty Ltd ABN 76 002 113 779
Level 7, 80 William St East Sydney NSW
Australia 2011 www.groupgsa.com
T +612 9361 4144 F +612 9332 3458
architecture interior design urban design landscape
nom architect M. Sheldon 3990

Project Title

**WARNERS BAY
BUPA AGED CARE**
Drawing Title
**LANDSCAPE PLAN
CENTRAL COURTYARD**

Drawing Created (date) 07/01/16

Drawing Created (by) SS

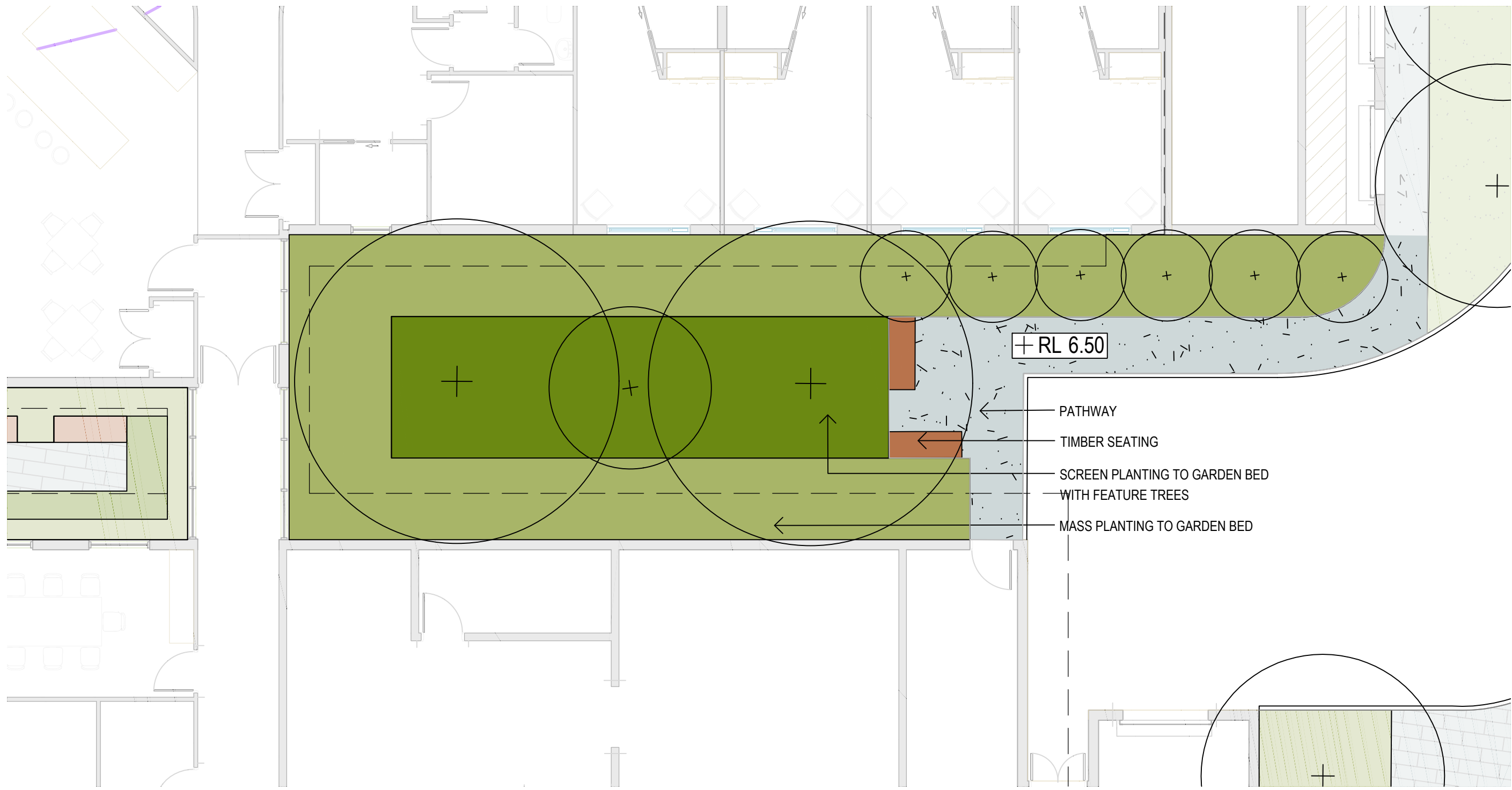
Verified JH

Approved JH

Scale 1:100 @A1

Project No. 15659
Drawing No. 1101
Issue C

This drawing is the copyright of Group GSA Pty Ltd and may not be altered, reproduced or transmitted in any form or by any means in part or in whole without the written permission of Group GSA Pty Ltd. All levels and dimensions are to be checked and verified on site prior to the commencement of any work, making of shop drawings or fabrication of components. Do not scale drawings. Use figured Dimensions.



01 Western Courtyard
1:100



02 Eastern Courtyard
1:100

KEY

- | | | | | | | | |
|--|-------------------------------|--|----------------------------|--|----------------------|--|--------------------|
| | EXISTING TREES TO BE RETAINED | | SENSORY PLANTING | | ARTIFICIAL TURF | | TRAFFICABLE PAVERS |
| | NEW TREE PLANTING | | VEGETABLE GARDEN | | CONCRETE UNIT PAVERS | | CONCRETE |
| | SCREEN PLANTING | | TURF | | BRICK PAVERS | | TIMBER SEAT |
| | BED PLANTING | | RIPARIAN SETBACK REFER VMP | | TIMBER DECKING | | 1800 mm FENCE |

Amendments		
Issue	Description	Date
A	ISSUE FOR INFORMATION	13/01/2016
B	ISSUE FOR DRAFT DA	15/01/2016
C	ISSUE FOR DA	28/01/2016
D	ISSUE FOR REVISED DA	27/06/2016

Client
BUPA Care
Client Details
Level 2, 420 King Street
Newcastle, NSW, 2300
Consultant
Jackson Teece

Consultant
Rider Levett Bucknall

Consultant
Seca Solution

Consultant
APP Corporation

Consultant
De Witt Consulting

Consultant
MPC Consulting Engineers

Architect

GROUP GSA
Group GSA Pty Ltd. ABN 76 002 113 779
Level 7, 80 William St East Sydney NSW
Australia 2011 www.groupgsa.com
T +612 9361 4144 F +612 9332 3458
architecture interior design urban design landscape
nom architect M. Sheldon 3990

Project Title

**WARNERS BAY
BUPA AGED CARE**
Drawing Title
**LANDSCAPE PLAN
EXTERNAL COURTYARDS**

Drawing Created (date) 07/01/16
Drawing Created (by) SS
Verified JH
Approved JH
Scale 1:100 @A1

Project No. 15659
Drawing No. 1102
Issue D

This drawing is the copyright of Group GSA Pty Ltd and may not be altered, reproduced or transmitted in any form or by any means in part or in whole without the written permission of Group GSA Pty Ltd. All levels and dimensions are to be checked and verified on site prior to the commencement of any work, making of shop drawings or fabrication of components. Do not scale drawings. Use figured Dimensions.

FOOD GROWING					
BRSp	Brassica species	Kale	300mm	0.45 x 0.45m	150mm
CP	Cucurbita pepo var. cylindrica	Zucchini	900mm	1.5 x 1.5m	300mm
DWC	Dwarf citrus	Dwarf Lemon	as shown	1.5 X 1.0m	45L
FA	Fragaria x ananassa	Strawberry	300mm	0.3 x 0.5m	100mm
LSp	Lycopersicon species	Tomato	900mm	1.5 x 1m	300mm
NSp	Nasturtium species	Nasturtium	300mm	0.5 x 0.4m	300mm
OE	Olea europea	Olive	as shown	8.0 x 3.0m	45L
OV	Origanum vulgare	Oregano	300mm	0.3 x 0.3m	150mm
RO	Rosmarinus officinalis	Rosemary	400mm	1.5 x 1.5m	200mm
SE	Salvia elegans	Pineapple Sage	600mm	1.2 x 0.9m	200mm
SSp	Syzygium species	Lilly Pilly	as shown	2.0 x 1.0m	45L
TV	Tulbaghia violaceae	Society Garlic	300mm	0.3 x 0.3m	150mm
SENSORY					
AR	Ajuga reptans	Bugle weed	300mm	0.3 x 0.6m	300mm
CAp	Chrysocephalum apiculatum	Everlasting Paper Daisy	400mm	0.3 x 0.6m	150mm
COSp	Cosmos species	Cosmos	600mm	1.5 x 0.6m	200mm
GSp	Gardenia species	Gardenia	700mm	1.5 x 0.8m	200mm
LSp	Lagerstroemia species	Crape Myrtle	900mm	1 x 1m	25L
LSp	Lavandula species	Lavender	600mm	1.0 x 1.0m	25L
MO	Melissa officinalis	Lemon Balm	500mm	0.5 x 0.75m	200mm
MS	Mentha spicata	Mint	900mm	0.4 x 1.1m	100mm
PC	Pelargonium citrosum	Lemon Scented Geranium	600mm	0.8 x 1.0m	200mm
PA	Plectranthus australis	Swedish Ivy	600mm	0.4 x 1.0m	200mm
SS	Sedum spectabile	Ice Plant	600mm	0.5 x 0.7m	150mm
SB	Stachys byzantine	Lamb's Ears	300mm	0.3 x 0.5m	150mm
SV	Syringa vulgaris	Common Lilac	1000mm	1.8 x 1.8m	200mm
TJ	Trachelospermum jasminoides	Star Jasmine	1000mm	2 x 2.5m	200mm

FOOD GROWING



Brassica species



Cucurbita pepo var. cylindrica



Dwarf citrus



Fragaria x ananassa



Lycopersicon species



Nasturtium species



Olea europea



Origanum vulgare



Rosmarinus officinalis



Salvia elegans



Syzygium species



Tulbaghia violaceae

SENSORY



Ajuga reptans



Chrysocephalum apiculatum



Cosmos species



Gardenia species



Lagerstroemia species



Lavandula species



Melissa officinalis



Mentha spicata



Pelargonium citrosum



Plectranthus australis



Sedum spectabile




Stachys byzantine



Syringa vulgaris



Trachelospermum jasminoides

Amendments			Client		Architect		Project Title		
Issue	Description	Date	BUPA Care Client Details Level 2, 420 King Street Newcastle, NSW, 2300 Consultant Jackson Teece		 <small>Group GSA Pty Ltd ABN 76 002 113 779 Level 7, 80 William St East Sydney NSW Australia 2011 www.groupgsa.com T +612 9361 4144 F +612 9332 3458</small> <small>architecture interior design urban design landscape nom architect M. Sheldon 3990</small>		WARNERS BAY BUPA AGED CARE Drawing Title LANDSCAPE INDICATIVE PLANT SCHEDULE SHEET 2		
A	ISSUE FOR DA	28/01/2016							
B	ISSUE FOR REVISED DA	27/06/2016							
			Consultant	Consultant					
			Rider Levett Bucknall	De Witt Consulting					
			Consultant	Consultant	Consultant	Consultant			
			Seca Solution	MPC Consulting Engineers	Wood & Grieve Engineers	Northrop			